



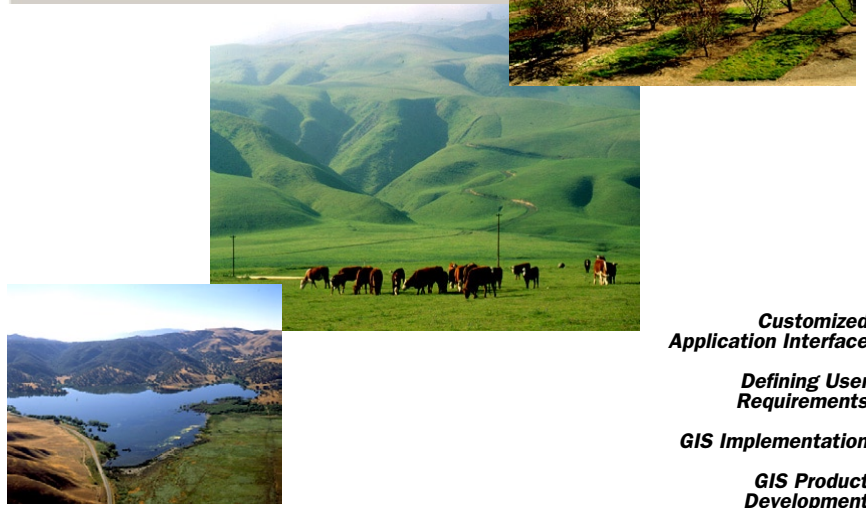
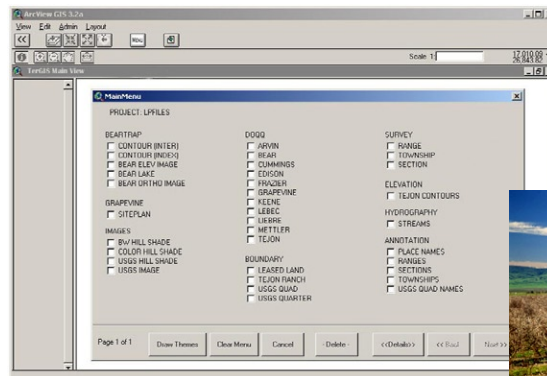
# NA Needs Assessment

Tejon Ranch, a privately-held land holding company, that has over 285,000 acres of land devoted to ranching, farming, hunting, movie production, and development, requested FORMA Systems' expertise in developing a needs assessment for a self-sufficient Geographic Information System (GIS). Tejon Ranch needed this technology to guide them into the 21<sup>st</sup> century.

FORMA Systems conducted interviews with key personnel, distributed questionnaires, organized seminars and evaluated the current Tejon Ranch software and hardware architecture to determine the best solution for the organization's future. Thorough investigation was done to select the most suitable GIS software available, and ESRI's GIS product line was chosen to lead the way for Tejon Ranch.

FORMA Systems launched the implementation process with a needs assessment pilot study. A priority area needs assessment was determined using our past experience and expertise along with input from the Tejon Ranch staff. This pilot study was designed to be a cross-departmental showcase of GIS applications, and served to maximize the initial return on investment through immediately useful and product-oriented analysis.

The complexity of the GIS software and available staff resources was a challenge to convince the Ranch to utilize the applications. FORMA Systems in-turn developed a simplistic interface to the GIS software, TerGIS, that granted users the ability to access the available information using familiar commands and menus. This simple, but effective interface, gave the end users the ability to display, analyze, and plot data with a few clicks of a mouse. Tejon Ranch now has a fully-operational GIS system with a qualified staff that maintains the ever-evolving system. FORMA Systems is proud to have assisted in making this accomplishment a success.



- Customized Application Interface**
- Defining User Requirements**
- GIS Implementation**
- GIS Product Development**
- Hardware Architecture**
- Software Needs**