



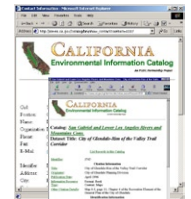
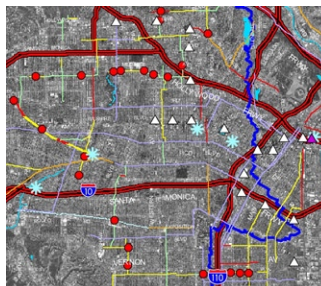
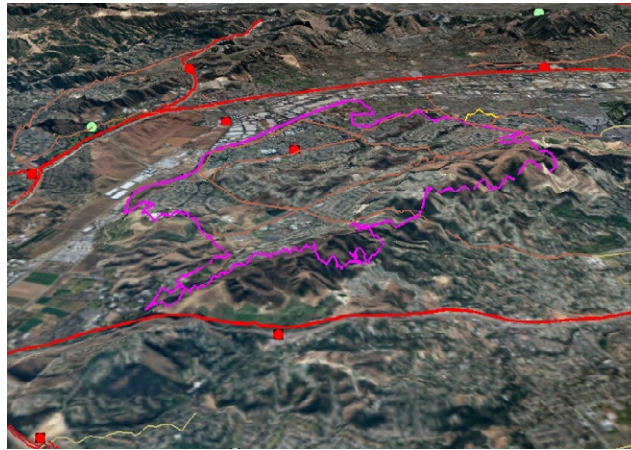
DA Data Assembly

FORMA Systems was responsible for the data collection and cataloging, as well as the systems integration for the California Department of Fish and Game. The data collected into the GIS system is to be used by the Department of Fish and Game for open space planning efforts within an Open Space Plan project.

The GIS system contains over 600 records of data in digital and hardcopy format related to biological, demographical, environmental, planning, and infrastructure categories as well as aerial imagery at 1 meter per pixel resolution for the entire 1.2 million acre project area. FORMA Systems contacted and received data from over 150 local and regional agencies and organizations. The primary public agencies that have been involved with the data collection effort include the Army Corp of Engineers, Los Angeles County Public Works, Orange County Planning Division, United States Forest Service, United States Fish and Wildlife Service, Metropolitan Transportation Authority, Orange County Transportation Authority, Los Angeles Department of Transportation, and several local city jurisdictions. The type of information collected includes GIS, CAD, and aerial imagery data in addition to hardcopy maps and other documents containing reports, studies, and summaries which were cataloged into the California Environmental Resources Evaluation System (CERES) online catalog.

Because the GIS system is built upon a relational database structure, the GIS data is integrated with the online catalog information throughout the GIS system. The catalog contains records of information, which include reference materials, hardcopy information, data contacts, GIS digital data and descriptions, imagery, maps and other documentation. The records contain a unique number which is linked back to the data collected within the GIS system. This unique number provides the link needed to access information from both the catalog and the GIS system.

The data collected and cataloged is to be used within Phase II of the Open Space Plan for the planning of Open Space areas.



- Data Capture**
- Data Conversion**
- Data Formats**
- Data Integration**
- Public Agency Coordination**
- Relational Database**

